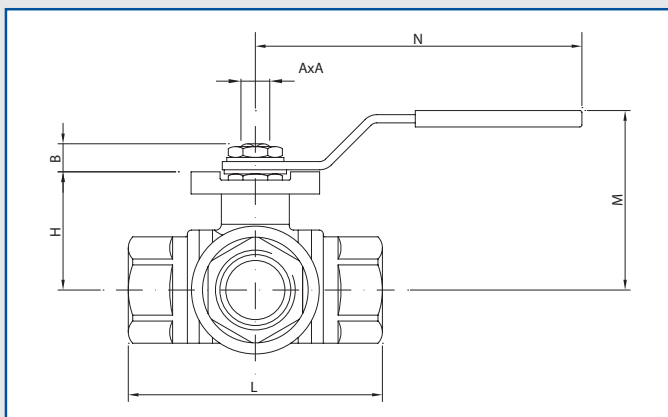


**VALVOLA A SFERA IN AISI 316 (CF8M) A 3 VIE L (V31) O T (V32)
A PASSAGGIO RIDOTTO**
**3 WAYS STAINLESS STEEL AISI 316 (CF8M) BALL VALVE L PORT
(V31) OR T PORT (V32) REDUCED BORE**



SERIES V31-V32



CARATTERISTICHE

1. Valvola a sfera a 3 vie a passaggio ridotto in acciaio Inox
2. Sfera a "L" o a "T"
3. Costruita in acciaio Inox AISI 316 (CF8M)
4. Filettate GAS (DIN 2999) o NPT (ANSI B 2.1)
5. Quattro seggi in PTFE + 15% Fibra di Vetro
6. O-ring in Viton
7. Flangia per montaggio diretto attuatore secondo ISO 5211
8. Sistema di antiespulsione
9. Sistema anti statico
10. Sistema di bloccaggio
11. Max pressione di esercizio: 63 Kg/cm²
12. Temperatura di esercizio: -25°C +180°C

FEATURES

1. 3 way reduced bore stainless steel ball valve
2. "L" or "T" Port
3. Made in AISI 316 (CF8M)
4. Available ends: GAS thread (DIN 2999), NPT thread (ANSI B 2.1)
5. Four ball seats PTFE + 15% G.F.
6. Viton O-ring
7. Direct mounting actuator ISO 5211
8. Blow-out proof stem
9. Anti static device
10. Locking system
11. Max. working pressure 63 Kg/cm²
12. Working temperature -25°C +180°C

MOLLE A TAZZA: Garantiscono un carico costante sulla baderna assicurando una tenuta perfetta anche in caso di variazione dei parametri di lavoro.

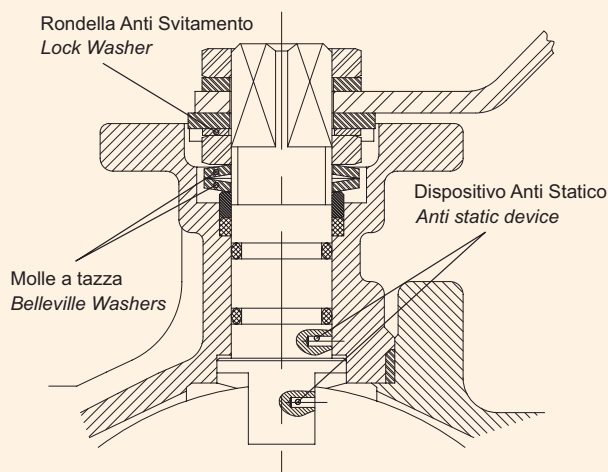
RONDELLA ANTI SVITAMENTO: Previene lo svitamento del dado sullo stelo nel caso di applicazioni caratterizzate da un elevato numero di cicli di lavoro.

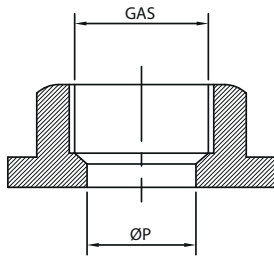
DISPOSITIVO ANTI STATICO: Garantisce la continuità elettrica fra la sfera, lo stelo e il corpo impedendo la formazione di cariche statiche. Necessario nel caso di fluidi infiammabili.

BELLEVILLE WASHERS: Provide constant "live load" on the stem seals, assuring a tight seal even with varying service parameters.

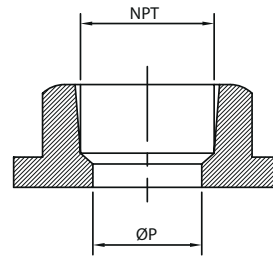
LOCK WASHER: Prevents unthreading of stem nut in high cycle automation applications.

ANTI STATIC DEVICE: Guarantees the electric continuity between ball, stem and body and prevents static charge accumulation. Needed in case of flammable fluids.





filettatura GAS / GAS thread
passaggio ridotto / reduced bore



filettatura NPT / NPT thread
passaggio ridotto / reduced bore

DIMENSIONI / DIMENSIONS

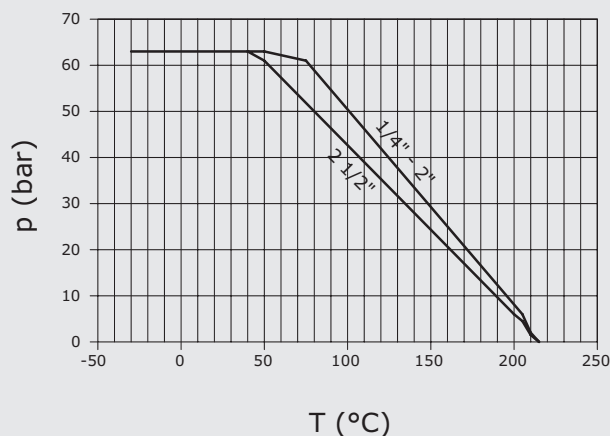
| Ref. Code (*) | Size | DN (mm) | PN (kg/cm ²) | ØP (mm) | H (mm) | L (mm) | N (mm) | M (mm) | Weight (kg) |
|---------------|--------|---------|--------------------------|---------|--------|--------|--------|--------|-------------|
| PV02-V3abM14 | 1/4" | 8 | 63 | 9.5 | 37 | 75 | 130 | 66 | 0.70 |
| PV02-V3abl38 | 3/8" | 10 | 63 | 11 | 37 | 75 | 130 | 66 | 0.67 |
| PV02-V3abA12 | 1/2" | 15 | 63 | 12 | 37 | 75 | 130 | 66 | 0.63 |
| PV02-V3abB34 | 3/4" | 20 | 63 | 15 | 41 | 88 | 161 | 72 | 0.95 |
| PV02-V3abC10 | 1" | 25 | 63 | 20 | 47 | 100 | 161 | 77 | 1.40 |
| PV02-V3abD13 | 1 1/4" | 32 | 63 | 25 | 56 | 122 | 203 | 92 | 2.90 |
| PV02-V3abE15 | 1 1/2" | 40 | 63 | 32 | 60 | 131 | 203 | 96 | 3.60 |
| PV02-V3abF20 | 2" | 50 | 63 | 40 | 71 | 158 | 203 | 107 | 6.25 |
| PV02-V3abG25 | 2 1/2" | 65 | 63 | 49 | 95 | 178 | 254 | 135 | 8.95 |

CONNESSIONI / CONNECTIONS

| Ref. Code (*) | Size | ISO 5211 | AxA (mm) | B (mm) |
|---------------|--------|----------|----------|--------|
| PV02-V3abM14 | 1/4" | F03-F04 | 9 x 9 | 7 |
| PV02-V3abl38 | 3/8" | F03-F04 | 9 x 9 | 7 |
| PV02-V3abA12 | 1/2" | F03-F04 | 9 x 9 | 7 |
| PV02-V3abB34 | 3/4" | F04-F05 | 11 x 11 | 7 |
| PV02-V3abC10 | 1" | F04-F05 | 11 x 11 | 7 |
| PV02-V3abD13 | 1 1/4" | F05-F07 | 14 x 14 | 7 |
| PV02-V3abE15 | 1 1/2" | F05-F07 | 14 x 14 | 12 |
| PV02-V3abF20 | 2" | F05-F07 | 14 x 14 | 12 |
| PV02-V3abG25 | 2 1/2" | F07-F10 | 17 x 17 | 14 |

To complete the code, replace a with 1= "L" valve; 2= "T" valve and b with G=Gas; N=NPT

DIAGRAMMA PRESSIONE - TEMPERATURA PRESSURE - TEMPERATURE CHART



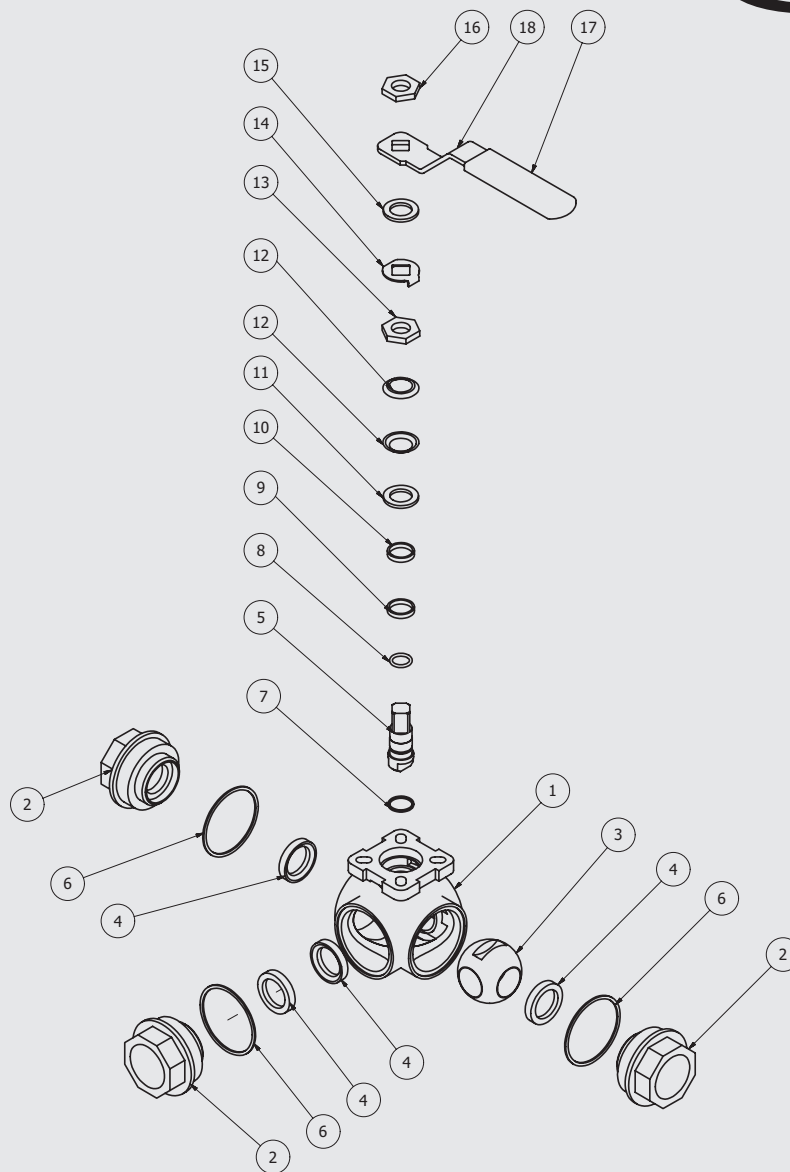
VALORI KV / KV VALUES

| Size | 1/4" | 3/8" | 1/2" | 3/4" |
|---|------|------|------|------|
| Kv (m ³ /h) H ₂ O | 11 | 11 | 13 | 15 |

| Size | 1" | 1 1/4" | 1 1/2" | 2" |
|---|----|--------|--------|-----|
| Kv (m ³ /h) H ₂ O | 31 | 39 | 62 | 103 |

Kv: La portata di acqua in metri cubi / ora che determina una perdita di carico nella valvola di 1 bar

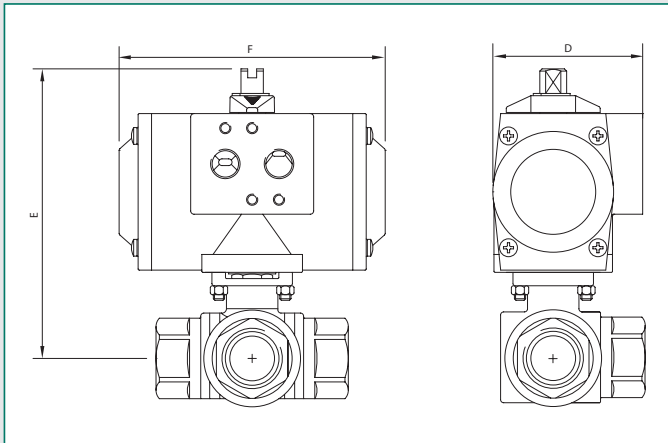
Kv: The rate of flow of water in cubic meter per hour that will generate a pressure drop of 1 bar across the valve



MATERIALI / MATERIALS

| N° | Articolo | Material | Item |
|----|-----------------------------|--------------------------|------------------------------|
| 1 | Corpo | Acciaio Inox 316 / SS316 | Body |
| 2 | Chiusura | Acciaio Inox 316 / SS316 | Cap |
| 3 | Sfera | Acciaio Inox 316 / SS316 | Ball |
| 4 | Seggio sfera | PTFE + 15% GF | Ball seat |
| 5 | Stelo con disp. antistatico | Acciaio Inox 316 / SS316 | Stem with anti static device |
| 6 | Guarnizioni | PTFE | Gasket |
| 7 | Rondella antifrizione | PTFE | Trust washer |
| 8 | O-ring | Viton | O-ring |
| 9 | Baderna | PTFE | Stem packing |
| 10 | Guarnizioni | Inox + PTFE / SS + PTFE | Gasket |
| 11 | Anello stelo | Acciaio Inox 316 / SS316 | Stem ring |
| 12 | Molla a tazza | Acciaio Inox 301 / SS301 | Belleville washer |
| 13 | Dado | ASTM A 194-8 | Nut |
| 14 | Anello di bloccaggio | DIN 1.4301 (AISI 304) | Stopper |
| 15 | Rondella anti svitamento | DIN 1.4301 (AISI 304) | Lock washer |
| 16 | Dado maniglia | DIN 1.4301 (AISI 304) | Handle nut |
| 17 | Rivestimento maniglia | Vynil | Handle sleeve |
| 18 | Maniglia | DIN 1.4301 (AISI 304) | Handle |

**VALVOLA A SFERA IN AISI 316 (CF8M) A 3 VIE L (V31) O T (V32)
A PASSAGGIO RIDOTTO CON ATTUATORE PNEUMATICO
3 WAYS STAINLESS STEEL AISI 316 (CF8M) BALL VALVE L PORT (V31)
OR T PORT (V32) REDUCED BORE WITH PNEUMATIC ACTUATOR**



Dimensioni con Attuatore in Tecnopolimero a Doppio Effetto
Dimensions with Double Acting Techno-polymer Actuator

| Part n° | Size | DN | PN | D | E | F |
|----------------|--------|----|----|-----|-----|-----|
| UT10DE-V3abM14 | 1/4" | 8 | 63 | 67 | 125 | 119 |
| UT10DE-V3abl38 | 3/8" | 10 | 63 | 67 | 125 | 119 |
| UT10DE-V3abA12 | 1/2" | 15 | 63 | 67 | 125 | 119 |
| UT10DE-V3abB34 | 3/4" | 20 | 63 | 67 | 134 | 119 |
| UT13DE-V3abC10 | 1" | 25 | 63 | 86 | 159 | 160 |
| UT13DE-V3abD13 | 1 1/4" | 32 | 63 | 86 | 168 | 160 |
| UT13DE-V3abE15 | 1 1/2" | 40 | 63 | 86 | 186 | 160 |
| UT18DE-V3abF20 | 2" | 50 | 63 | 101 | 219 | 175 |

Valvole maggiori non disponibili con attuatori in tecnopolimero
Bigger sizes not available with techno-polymer actuators



Dimensioni con Attuatore in Tecnopolimero a Semplice Effetto
Dimensions with Spring Return Techno-polymer Actuator

| Part n° | Size | DN | PN | D | E | F |
|----------------|--------|----|----|-----|-----|-----|
| UT10S2-V3abM14 | 1/4" | 8 | 63 | 67 | 125 | 119 |
| UT10S2-V3abl38 | 3/8" | 10 | 63 | 67 | 125 | 119 |
| UT13S4-V3abA12 | 1/2" | 15 | 63 | 86 | 145 | 160 |
| UT13S4-V3abB34 | 3/4" | 20 | 63 | 86 | 154 | 160 |
| UT18S4-V3abC10 | 1" | 25 | 63 | 101 | 181 | 175 |
| UT18S4-V3abD13 | 1 1/4" | 32 | 63 | 101 | 190 | 175 |

Valvole maggiori non disponibili con attuatori in tecnopolimero
Bigger sizes not available with techno-polymer actuators

Dimensioni con Attuatore in Alluminio a Doppio Effetto
Dimensions with Double Acting Aluminum Actuator

| Part n° | Size | DN | PN | D | E | F |
|----------------|--------|----|----|----|-----|-----|
| MT05DE-V3abM14 | 1/4" | 8 | 63 | 67 | 135 | 119 |
| MT05DE-V3abl38 | 3/8" | 10 | 63 | 67 | 135 | 119 |
| MT05DE-V3abA12 | 1/2" | 15 | 63 | 67 | 135 | 119 |
| MT05DE-V3abB34 | 3/4" | 20 | 63 | 67 | 144 | 119 |
| MT07DE-V3abC10 | 1" | 25 | 63 | 70 | 156 | 168 |
| MT15DE-V3abD13 | 1 1/4" | 32 | 63 | 70 | 165 | 168 |
| MT15DE-V3abE15 | 1 1/2" | 40 | 63 | 81 | 186 | 175 |
| MT17DE-V3abF20 | 2" | 50 | 63 | 81 | 197 | 207 |
| MT25DE-V3abG25 | 2 1/2" | 65 | 63 | 96 | 223 | 248 |

Dimensioni con Attuatore in Alluminio a Semplice Effetto
Dimensions with Spring Return Aluminum Actuator

| Part n° | Size | DN | PN | D | E | F |
|----------------|--------|----|----|-----|-----|-----|
| MT05S2-V3abM14 | 1/4" | 8 | 63 | 67 | 135 | 119 |
| MT05S2-V3abl38 | 3/8" | 10 | 63 | 67 | 135 | 119 |
| MT05S2-V3abA12 | 1/2" | 15 | 63 | 67 | 141 | 119 |
| MT15S4-V3abB34 | 3/4" | 20 | 63 | 81 | 164 | 165 |
| MT17S5-V3abC10 | 1" | 25 | 63 | 81 | 169 | 207 |
| MT20S4-V3abD13 | 1 1/4" | 32 | 63 | 96 | 185 | 186 |
| MT25S4-V3abE15 | 1 1/2" | 40 | 63 | 96 | 203 | 248 |
| MT30S4-V3abF20 | 2" | 50 | 63 | 114 | 233 | 241 |
| MT35S4-V3abG25 | 2 1/2" | 65 | 63 | 131 | 279 | 261 |

To complete the code, replace a with 1= "L" valve; 2= "T" valve and b with G=Gas; N=NPT

Actuators are sized for normal conditions based on supply air pressure of at least 5.62 Bar (80 PSI). Emme Technology Srl reserves the right to change or modify products without prior notice and without incurring any obligation to make such changes on products previously or subsequently sold.

CARATTERISTICHE

- Attuatore Pneumatico a Doppio o Semplice Effetto avente le stesse dimensioni di ingombro
- Disponibile in Tecnopolimero, in Alluminio o in Acciaio Inox AISI 316
- Pressione di alimentazione: 2÷8 bar (per Tecnopolimero) – 2÷10 Bar (per Alluminio e Inox)
- Temperatura di esercizio: -20°C +80°C (per Alluminio e Inox disponibile anche per Alte e Basse temperature)

FEATURES

- Double Acting or Spring Return actuators with same compact dimensions
- Available in Techno-polymer, in Aluminum or in Stainless Steel AISI 316
- Working Pressure: 2÷8 bar (for Techno-polymer) – 2÷10 Bar (for Aluminum and Stainless Steel)
- Working Temperature: -20°C +80°C (Aluminum and Stainless Steel units are also available in Low temp or High Temp configuration)

A RICHIESTA

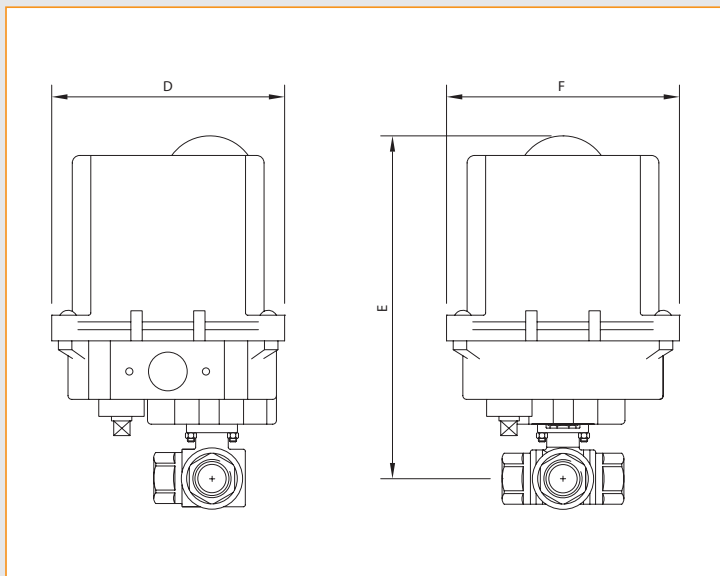
- Elettrovalvole NAMUR
- Box Fine Corsa
- Posizionatori
- Riduttori Sganciabili
- Attuatori Elettrici

OPTIONAL

- NAMUR Solenoid Valves
- Limit Switch Boxes
- Positioners
- Declutchable Gear Boxes
- Electric Actuators

Gli attuatori sono dimensionati per applicazioni normali e pressione di alimentazione di almeno 5.62 Bar. Emme Technology Srl si riserva il diritto di cambiare o modificare le caratteristiche tecniche di prodotto senza preavviso e senza incorrere nell'obbligo di apportare tali modifiche sui prodotti precedentemente o successivamente venduti.

**VALVOLA A SFERA IN AISI 316 (CF8M) A 3 VIE L (V31) O T (V32) A PASSAGGIO RIDOTTO CON ATTUATORE ELETTRICO
3 WAYS STAINLESS STEEL AISI 316 (CF8M) BALL VALVE L PORT (V31) OR T PORT (V32) REDUCED BORE WITH ELECTRIC ACTUATOR**



CARATTERISTICHE

1. Design compatto
2. Base in alluminio verniciato ed ingranaggi in metallo
3. Grado di protezione IP67
4. Con manuale d'emergenza
5. 2 fine corsa standard
6. A richiesta con posizionario
7. Temperatura di esercizio: -10°C +60°C

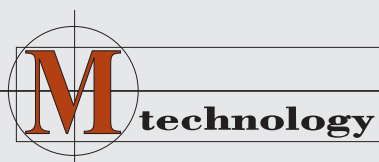
FEATURES

1. Compact Design
2. Epoxy coated die cast aluminum base and metal gears
3. Protection degree: IP67
4. With manual override
5. With n°2 switches as standard
6. On request: positioner
7. Working Temperature: -10°C +60°C



| Part n° | SIZE | DN | PN | D | E | F |
|---------------|--------|----|----|-----|-----|-----|
| AE01*-V3abM14 | 1/4" | 8 | 63 | 120 | 183 | 127 |
| AE01*-V3abI38 | 3/8" | 10 | 63 | 120 | 183 | 127 |
| AE01*-V3abA12 | 1/2" | 15 | 63 | 120 | 183 | 127 |
| AE01*-V3abB34 | 3/4" | 20 | 63 | 120 | 192 | 127 |
| AE01*-V3abC10 | 1" | 25 | 63 | 120 | 197 | 127 |
| AE01*-V3abD13 | 1 1/4" | 32 | 63 | 120 | 206 | 127 |
| AE01*-V3abE15 | 1 1/2" | 40 | 63 | 120 | 210 | 127 |
| AE02*-V3abF20 | 2" | 50 | 63 | 120 | 222 | 127 |
| AE03*-V3abG25 | 2 1/2" | 65 | 63 | 168 | 295 | 157 |

*Diverse tensioni disponibili - Various voltages available



Emme technology S.r.l.

Via Socrate, 10 - 20864 Agrate Brianza (MB) - Italy
Tel. (+39) 039 9020 000 - Fax (+39) 039 9020 001